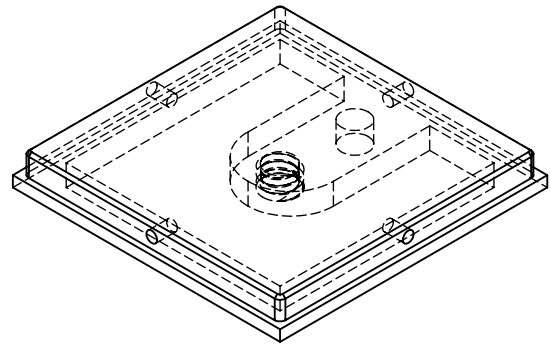
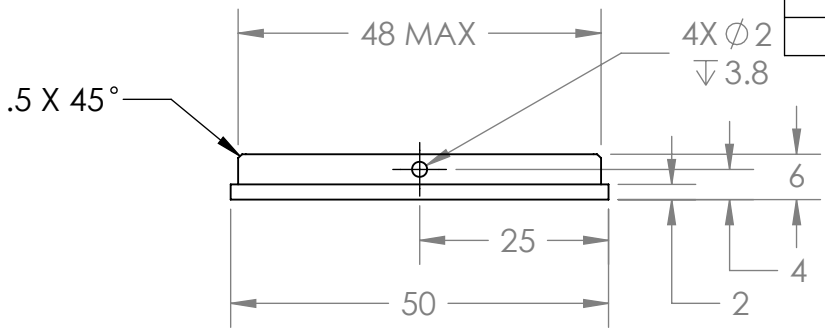
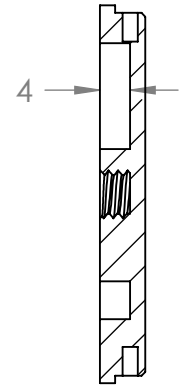
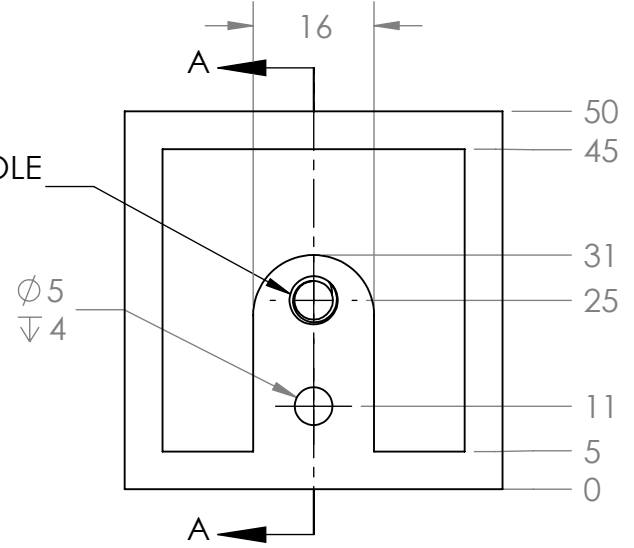


Revision:	Reason:	Date:
1	Added chamfer, adjusted fit.	1/24/12
2	2mm thick shell	1/24/12
3	Decided on and improved 1mm shell	3/17/12
4	Stackable version of 1mm shell	3/17/12



1/4-20 TAPPED HOLE  
↓ 4MM



SECTION A-A

UNLESS OTHERWISE SPECIFIED:	NAME	DATE
DIMENSIONS ARE IN MILLIMETERS	DESIGNED J Powell	1/23/12
TOLERANCES:	DRAWN Drew	1/23/12
FRACTIONAL ±	ENG APPR.	
ANGULAR: MACH ±1° BEND ±3°	MFG APPR.	
TWO PLACE DECIMAL ±	Q.A.	
THREE PLACE DECIMAL ±	COMMENTS:	
INTERPRET GEOMETRIC TOLERANCING PER:		
MATERIAL		
FINISH		
DO NOT SCALE DRAWING		

**PROPRIETARY AND CONFIDENTIAL**  
 THE INFORMATION CONTAINED IN THIS DRAWING IS THE SOLE PROPERTY OF JP AEROSPACE. ANY REPRODUCTION IN PART OR AS A WHOLE WITHOUT THE WRITTEN PERMISSION OF JP AEROSPACE IS PROHIBITED.

JP Aerospace		
TITLE: Mini Cube Base, Stackable		
SIZE <b>A</b>	PART NO.	REV <b>4</b>
SCALE: 1:1	WEIGHT:	SHEET 1 OF 1